

GOLF CLUB ESTATES

GOLF CLUB ESTATES PLANNED UNIT DEVELOPMENT
A REPLAT OF A PORTION OF LEXINGTON I OF SHERBROOKE P.U.D., ACCORDING TO THE PLAT THEREOF AS RECORDED IN PLAT BOOK 32, PAGES 195 THROUGH 198 INCLUSIVE, AND A REPLAT OF A PORTION OF LOT 4, TRACT 41, PALM BEACH FARMS COMPANY, PLAT NO. 13, ACCORDING TO THE PLAT THEREOF AS RECORDED IN PLAT BOOK 6, PAGES 98 THROUGH 99, INCLUSIVE, ALL OF THE PUBLIC RECORDS OF PALM BEACH COUNTY, FLORIDA, SAID LANDS LYING AND BEING IN HIATUS OF TOWNSHIP 44 1/2 SOUTH, RANGE 42 EAST, PALM BEACH COUNTY, FLORIDA.

SHEET 4 OF 5 JULY, 2003



SCALE: 1" = 40'

LEGEND:

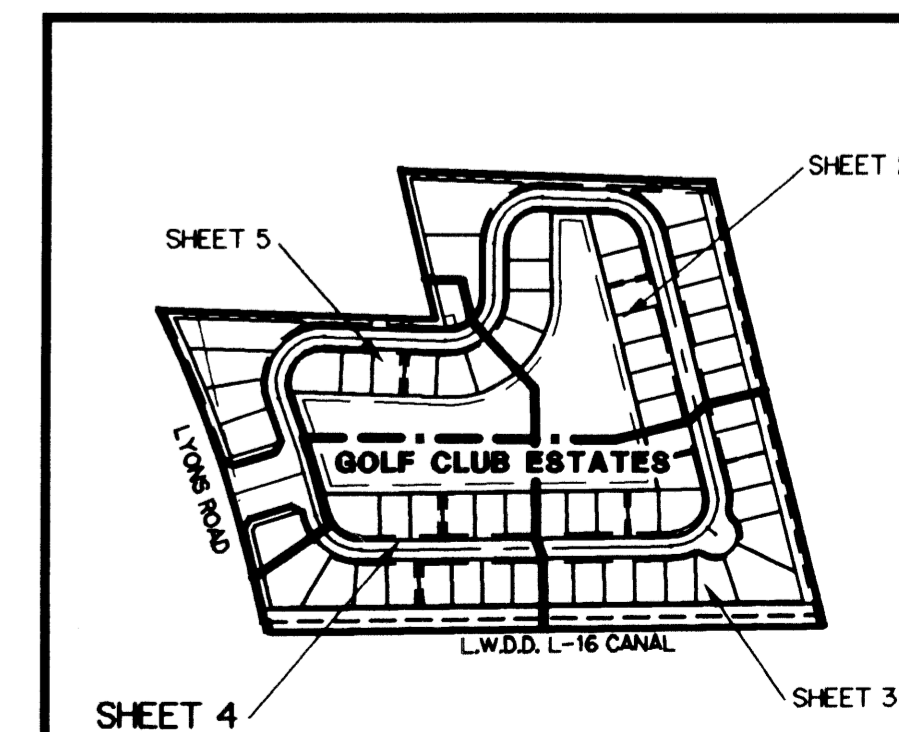
- - FND CONCRETE MONUMENT
- - SET PERMANENT REFERENCE MONUMENT, L.B. #6674
- ▲ - DELTA ANGLE
- AC - ACRES
- B.E. - BUFFER EASEMENT
- CB - CHORD BEARING
- CH - CHORD
- CL - CENTERLINE
- D.B. - DEED BOOK
- D.E. - DRAINAGE EASEMENT
- L - ARC LENGTH
- L.A.E. - LIMITED ACCESS EASEMENT
- L.M.A.E. - LAKE MAINTENANCE ACCESS EASEMENT
- L.M.E. - LAKE MAINTENANCE EASEMENT
- L.M.F. - LAKE MAINTENANCE EASEMENT
- L.S.E. - LIFT STATION EASEMENT
- N.R. - NOT RADIAL
- N.T.S. - NOT TO SCALE
- O.R.B. - OFFICIAL RECORD BOOK
- P.B. - PLAT BOOK
- P.B.C.U.E. - PALM BEACH COUNTY UTILITY EASEMENT
- P.C. - POINT OF CURVATURE
- P.I. - POINT OF INTERSECTION
- PGS. - PAGES
- P.S.M. - PROFESSIONAL SURVEYOR AND MAPPER
- R - RADIUS
- RAD. - RADIAL
- R/W - RIGHT-OF-WAY
- S.F. - SQUARE FEET
- S.T. - SURVEY TIE
- U.E. - UTILITY EASEMENT
- P.O.B. - POINT OF BEGINNING
- P.O.C. - POINT OF COMMENCEMENT
- N 737648.0171
E 905258.2326 - DENOTES STATE PLANE COORDINATES

NOTE:

COORDINATES SHOWN ARE GRID COORDINATES
 DATUM = NAD 83 (1990 ADJUSTMENT)
 ZONE = FLORIDA EAST ZONE
 LINEAR UNIT = U.S. SURVEY FEET
 COORDINATE SYSTEM = 1983 STATE PLANE TRANSVERSE MERCATOR PROJECTION
 ALL DISTANCES ARE GROUND
 SCALE FACTOR = 1.0000222
 ROTATION = 00°24'14" CLOCKWISE (GRID BEARING TO PLAT BEARING)

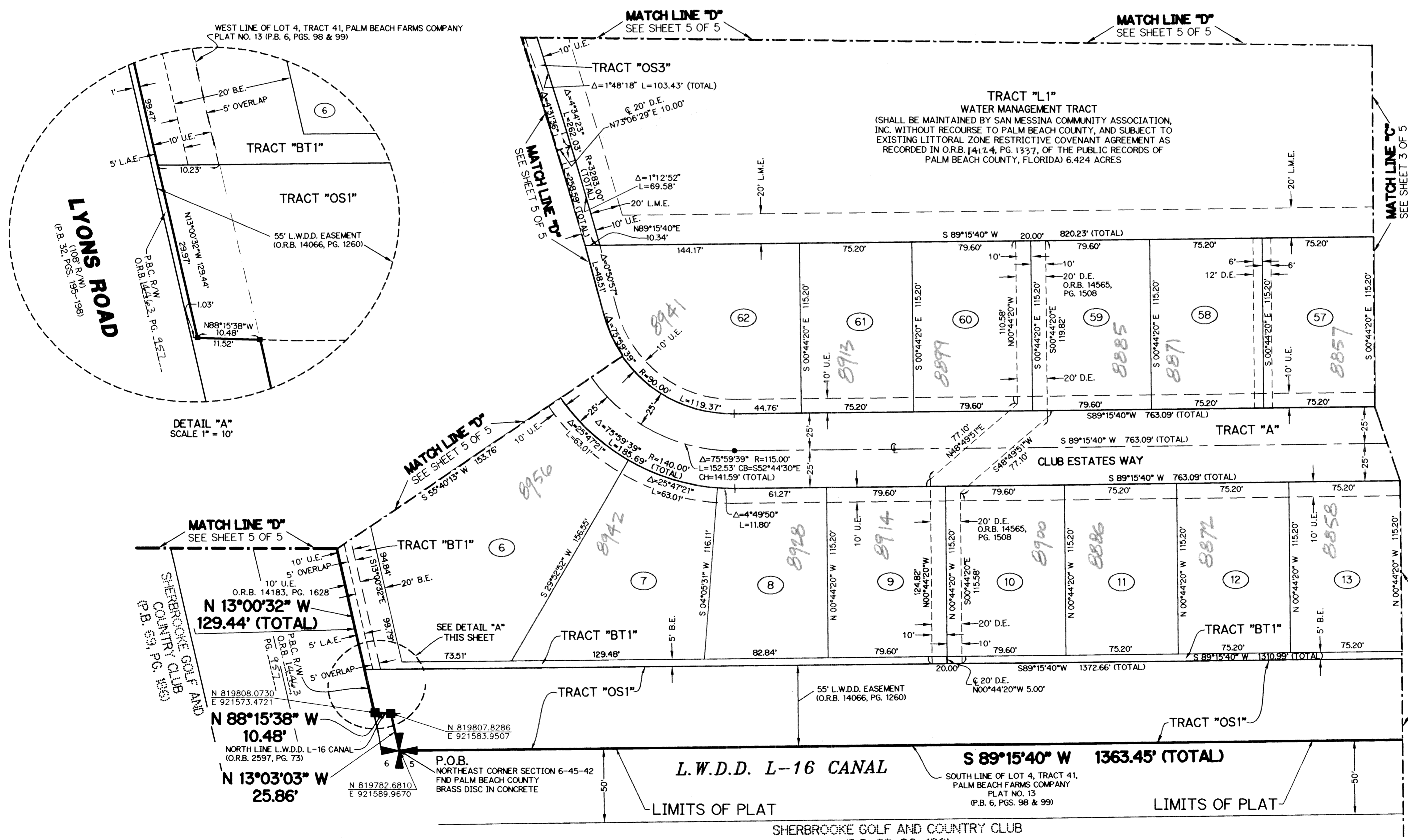
THIS INSTRUMENT PREPARED BY
 PERRY C. WHITE, P.S.M. 4213, STATE OF FLORIDA
 LAWSON, NOBLE AND WEBB, INC.
 ENGINEERS PLANNERS SURVEYORS
 420 COLUMBIA DRIVE
 WEST PALM BEACH, FLORIDA 33409
 LB-6674

KEY MAP



A694 SHEET 4 OF 5

SUBDIVISION Golf Club Estates
 BOOK 102 PAGE 4
 FLOOD HAZARD # 170A
 FLOOD ZONE 13
 ZONING PUD
 QUAD # 40
 SS
 TAZ 1005
 PUD NAME Golf Club Estates



DETAIL "A" SCALE 1" = 10'

SHERBROOKE GOLF AND COUNTRY CLUB (P.B. 59, PG. 136)